

Treat roads more  
like suggestions.



REVEL

QUALITY INNOVATION SERVICE

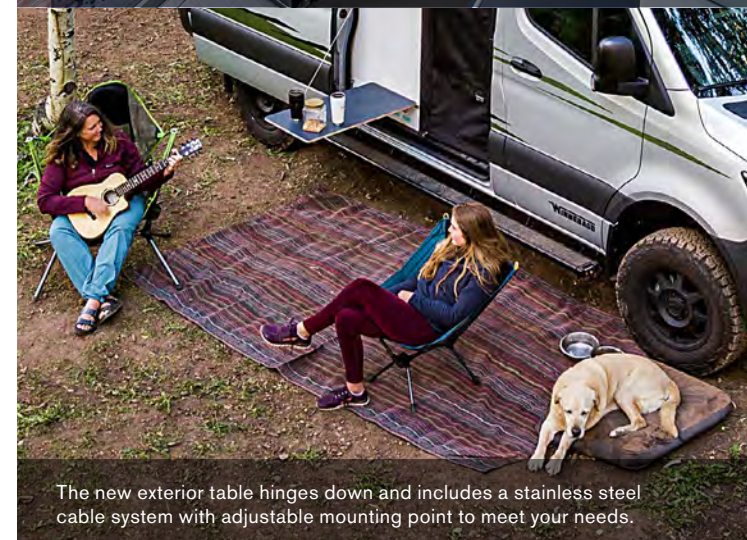
WINNEBAGO



## Get Out and Stay Out

The most off-road capable Camper Van we've ever built, the Winnebago® Revel® took the adventure van community by storm when it was introduced. Built on the 4WD version of the Mercedes-Benz® Sprinter chassis, the rugged Revel features a Power Lift platform bed that raises up to reveal a spacious Gear Garage, a cassette-style toilet to minimize weight and simplify operation, user-configurable storage solutions, and a host of other innovations.

The latest edition of the Revel continues to break new ground, with a redesigned galley, improved cabinetry, more durable interior, enhanced dinette and more. Two 125-amp-hour lithium iron phosphate (LiFePO4) batteries are charged via solar, shorepower or the dedicated second alternator. Together with the 2,000-watt inverter, this system provides enough power to run the Coleman®-Mach® 10 quiet A/C system when you need to cool down after a long hike.







The Revel lounge is comfortable and highly functional. The cab seats swivel to face the lounge and the redesigned, more ergonomic bench seat. You'll also find storage below and behind the seat, plus in-floor storage ahead of it. Two seat belts (one 3-point and one lap belt) accommodate passengers, while a sturdier new removable pedestal table adds flexibility.

The Revel's new Hydronic Heating System provides comfortable, quiet heating, controlled by a user-friendly LED touchscreen panel. The new colorway (Intrepid, with Silver Springs or Pewter cabinets) features durable, easy-to-maintain surfaces, industrial-strength honeycomb flooring, and reverse-cove molding at cabinet bases to ease cleanup. The overhead cabinets now feature lightweight folded and welded aluminum construction to maximize internal storage volume, and new, more durable positive-latching slam latches. And rugged RAM® Tough-Track™ mounts provide a simple, uncluttered way to mount devices where you'd like them.



In-floor storage



Swiveling cab seats



Cassette shades



Hydronic heating system panel





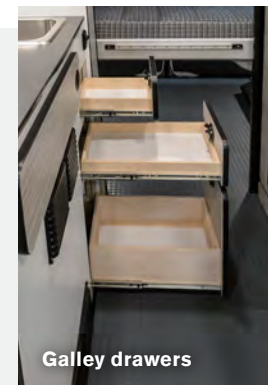
The redesigned galley makes efficient uses of available space to streamline cooking. The speedy induction cooktop now easily stores in a drawer when not in use to provide more counter space, and the larger refrigerator has been relocated for easy access from inside or out. A removable counter extension and new rectangular sink enhance working space; drawer space has been increased as well, with one drawer large enough to hold a small wastebasket.



Refrigerator



Removable counter extension and movable induction cooktop



Galley drawers



Induction storage drawer





The Revel's signature rear bump-outs allow the comfortable Power Lift bed to run cross-coach to provide added living space. Raising the bed transforms the living space into a Gear Garage with additional pocket storage, and provides easy access to the new gear bag storage beneath the bed, as well as access to the battery system, new internal freshwater tank and simplified water center panel.

The innovative wet bath includes a flexible showerhead, swiveling cassette toilet, and powered roof vent; deploying the two removable shelves or clothes hanger converts the bath to a handy storage locker for wet gear.



Gear bag storage



Pocket storage and water center panel



Wet bath



Cassette toilet disposal





Supportive, fully adjustable cab seats perfectly position you to take command of the Revel, aided by a full complement of Mercedes-Benz safety and performance features. The 4WD system includes high-low range, electronic stability, traction control and four-wheel ABS brakes as well as active brake assist to help avoid accidents with vehicles or pedestrians in front, DISTRONIC PLUS® adaptive cruise control, which maintains a defined distance from vehicles in front, and blind spot monitoring to help during lane changes, backing up and exiting the cab. Navigation help comes courtesy of the MBUX® infotainment center, which includes voice interface, Wi-Fi hotspot and rear camera.



Dash storage



MBUX infotainment center



Steering wheel



Cab seats with privacy panels





The Revel exterior continues the emphasis on rugged functionality. A newly redesigned exterior table easily hinges down using a height-adjustable stainless steel cable support system, while the movable ladder provides easy access to the durable metal roof rack. Extend the Bluetooth®-controlled awning from your smart phone or tablet, deploy the side and rear screen doors to let the fresh air in, then sit back and relax after your latest adventure.



Performance wheels and all-terrain tires



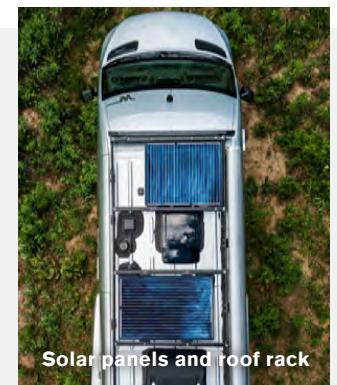
Movable ladder



Rear screen door

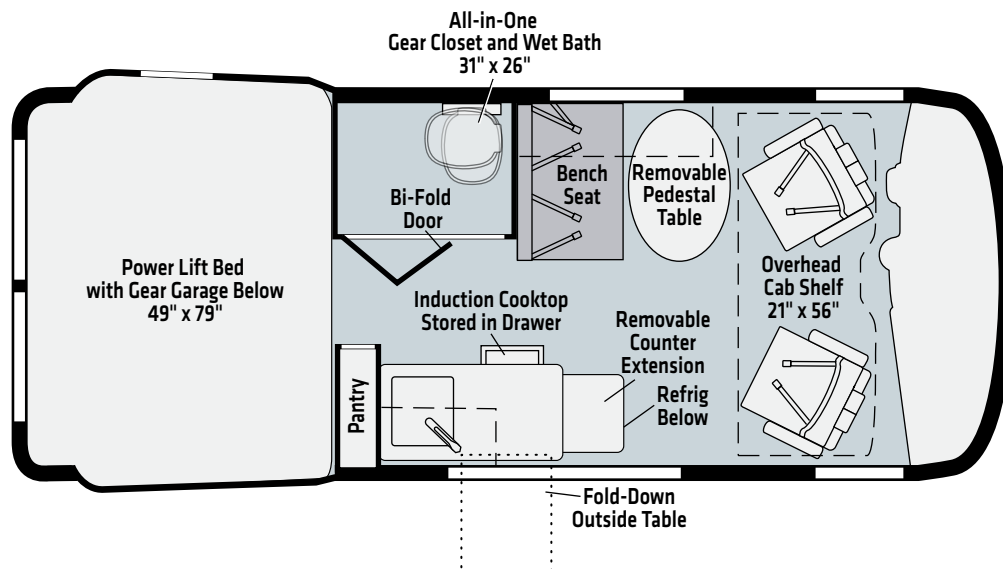


Bluetooth-controlled awning



Solar panels and roof rack

44E



Ultraleather

Vinyl





**Blue Grey**  
FULL-BODY PAINT



**Pebble Grey**  
FULL-BODY PAINT



**Silver Forest**  
FULL-BODY PAINT



**Blue Grey with Graphics**  
FULL-BODY PAINT



**Pebble Grey with Graphics**  
FULL-BODY PAINT



**Silver Forest with Graphics**  
FULL-BODY PAINT



## Intrepid



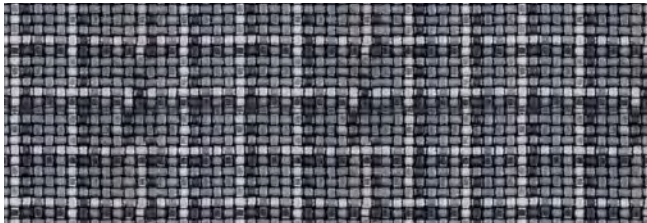
Ultraleather



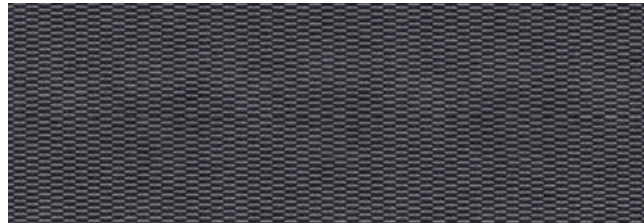
Accent



Wall Material



Bed Cover



Countertop

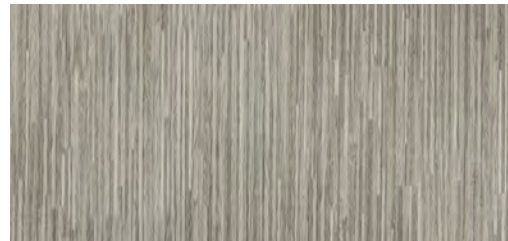


Vinyl Flooring

## Cabinets



Pewter



Silver Springs

*Winnebago® reserves the right to change décor materials and specifications without notice or obligation.*



WEIGHTS & MEASURES	44E
Length	19'7"
Exterior Height <sup>1</sup>	10'
Exterior Width	7'1"
Awning Length	9'6"
Interior Height	6'3"
Interior Width	5'8"
Freshwater Tank Capacity <sup>2</sup> (gal.)	21
Water Heater Capacity (gal.)	Continuous
Cassette Toilet Capacity <sup>2</sup> (gal.)	5
Holding Tank Capacity - Gray <sup>2</sup> (gal.)	21
LP Capacity (gal.)	NA
Fuel Capacity (gal.)	24.5
GCWR <sup>3</sup> (lbs.)	13,930
GVWR (lbs.)	9,050
GAWR - Front (lbs.)	4,101
GAWR - Rear (lbs.)	5,359
Wheelbase	144"

## Mercedes-Benz® Sprinter Chassis

**3.0L 6-cylinder, 188-hp, turbo-diesel engine, 7G-Tronic automatic transmission, 220-amp. alternator**

**On-demand 4WD** w/Hi/Lo range, electronic stability and traction control

**4-wheel ABS brakes**

**Trailer hitch<sup>4</sup>** 5,000-lb. drawbar/500-lb. maximum vertical tongue weight

**7-pin wiring connector**

## OPTIONAL EQUIPMENT

**Performance wheels and BF Goodrich® T/A® KO2 all-terrain tires**

## Cab Conveniences

**MBUX® touchscreen multimedia infotainment center** w/navigation, Wi-Fi hotspot, intelligent voice control and rear camera

**Cab seats** armrests, adjustable lumbar support, adjustable headrest, and slide/swivel/recline

**3-point seat belts**

**Dual airbags**

**DISTRONIC PLUS®** (adaptive cruise control)

**Power steering** w/tilt wheel

**Power mirrors** w/defrost and turn signals

**Power door locks** w/remote

**Power windows**

**12-volt powerpoints**

**Sunvisors**

**Folding privacy screens for cab door windows**

**Appliqué package**

**Keyless entry** w/remote

**Entry door assist handle** w/RAM® Tough-Track™ mounts

**Rain sensor** w/integrated wet wiper system

**High beam assist**

**Active brake assist**

**Dash charging station**

**Active lane keeping assist**

**Blind spot assist**

**Traffic sign assist**

## Interior

**LED ceiling lights** w/dimmer switch

**Tinted dual-pane euro acrylic windows** w/cassette shades

**Deluxe powered ventilator fan** w/rain cover

**Systems monitor panel**

**USB charging points**

**RAM® Tough-Track™ mounts** throughout

**Heavy-duty vinyl flooring** throughout

## Galley

**Removable counter extension**

**Laminate countertop**

**Portable single burner induction range top**

**3.0 cu. ft. 12V compressor driven refrigerator/freezer**

**Stainless steel sink** w/single control faucet

**Pantry**

**Removable, pedestal table**

**Full-extension drawers**

## Bath

**Flexible showerhead**

**Shower curtain**

**Shower** w/wall surround

**Wet bath** 31"x26"

**2 removable shelves** convert to wet storage cabinet

**Removable clothes rod**

**Swiveling cassette toilet**

**Powered roof vent**

## Bedroom

**Power lift bed** w/molded pockets and zip storage below

**Under-bed gear garage storage** w/six removable cargo tie-down anchors

**Powered roof vent**

**Reading lights**

## Exterior

**Side screen door** w/magnetic closure system

**Rear screen door** w/blackout panel

**Powered patio awning** w/LED lighting and Bluetooth® control

**Porch light** w/interior switch

**Running boards** w/ground effect lighting and rubber trim

**Rear mud guards**

**Movable ladder**

**Luggage rack**

**Fold-down exterior table**

## Heating & Cooling System

**Hydronic Heating System** w/LED touchscreen panel

## OPTIONAL EQUIPMENT

**Coleman®-Mach® 10 NDQ air conditioner** w/directional vents, Bluetooth® control and built-in thermostat

## Electrical System

**AC/DC load center/converter**

**(2) 125-amp.-hour Lithium ion batteries** w/dedicated second alternator to charge system

**Coach battery disconnect system**

**Dual-battery charge system**

**30-amp. power cord**

**Solar panel/battery charger**

**2,000-watt inverter/charger**

**Roof port wiring access**



## Plumbing System

**Water center control panel includes all control valves, connection points and exterior wash station w/pump switch**

**Winterization Package w/valve and siphon tube**

**On-demand water pump**

**Galley drain pump**

**Insulated/heated gray water holding tank**

**Potable water tank**

## Safety

**Smoke and carbon monoxide detectors**

**10 BC fire extinguisher**

**Ground fault interrupter**

**High-mount brake lamps**

**Daytime running lamps**

## Warranty<sup>4</sup>

**12-month/15,000-mile basic warranty<sup>5</sup>**

### FOOTNOTES

1. The height of each model is measured to the top of the tallest standard feature and is based on the curb weight of a typically equipped unit. The actual height of your vehicle may vary by several inches depending on chassis or equipment variations. Please contact your dealer for further information.
2. Capacities are based on measurements prior to tank installation. Slight capacity variations can result due to installation applications.
3. Actual towing capacity is dependent upon your particular loading and towing circumstances, which includes the GVWR, GAWR and GCWR as well as adequate trailer brakes. Please refer to the Operator's Manual of your vehicle for further towing information.
4. See separate chassis warranty.
5. See your dealer for complete warranty information.

NA Not Available

Not all items available in combination. See dealer for details.

Because features, specifications, equipment, and options may vary from those highlighted in this brochure, the buyer is responsible for confirming with the dealer the features, specifications, equipment, and options included on their specific vehicle. In addition, Winnebago's program of continuous product improvement may result in changes to vehicle specifications, equipment, model availability, and price without notice.

**LaMESA REC  
VAN**

LaMesaRV.com  
800-496-8778